

**Anti-LAMP1 Antibody**

**Our Anti-LAMP1 primary antibody from PhosphoSolutions is mouse monoclonal. It detects human LAMP1 and**  
**Catalog # AN1434**

**Specification**

---

**Anti-LAMP1 Antibody - Product Information**

Application	WB, IHC
Primary Accession	<a href="#">P11279</a>
Host	Mouse
Clonality	Monoclonal
Isotype	IgG1
Calculated MW	44882

**Anti-LAMP1 Antibody - Additional Information**

Gene ID **3916**

**Other Names**

CD107 antigen like family member A antibody, CD107 antigen-like family member A antibody, CD107a antibody, CD107a antigen antibody, LAMP 1 antibody, LAMP-1 antibody, LAMP1 antibody, LAMP1\_HUMAN antibody, LAMPA antibody, LGP120 antibody, IgpA antibody, Lysosomal membrane glycoprotein 120KD antibody, Lysosomal Associated Membrane Protein 1 antibody, Lysosome associated membrane glycoprotein 1 antibody, Lysosome-associated membrane glycoprotein 1 antibody, Lysosome-associated membrane protein 1 antibody, OTTHUMP00000040663 antibody

**Target/Specificity**

Lysosomal Associated Membrane Protein1 (LAMP1) is a protein that is localized primarily in lysosomes but may also be present on late endosomes and the plasma membrane. LAMP1 antibodies are therefore widely used as lysosome markers. It has recently been suggested that lysosomes are activated in microglia in the progression of multiple system atrophy (MSA) and thus play a key role in its pathology (Makioka et al., 2012).

**Dilution**

WB~~1:1000  
IHC~~1:100~500

**Format**

Protein G Purified

**Storage**

Maintain refrigerated at 2-8°C for up to 6 months. For long term storage store at -20°C in small aliquots to prevent freeze-thaw cycles.

**Precautions**

Anti-LAMP1 Antibody is for research use only and not for use in diagnostic or therapeutic procedures.

**Shipping**

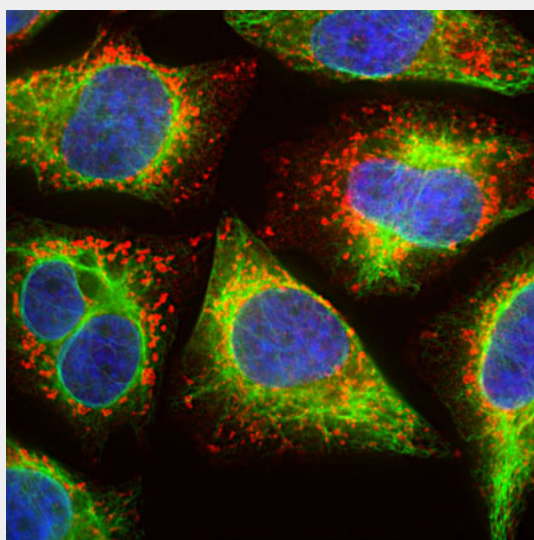
Blue Ice

## Anti-LAMP1 Antibody - Protocols

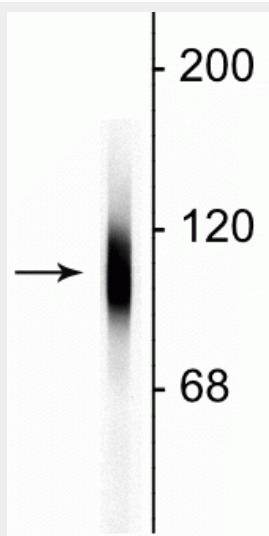
Provided below are standard protocols that you may find useful for product applications.

- [Western Blot](#)
- [Blocking Peptides](#)
- [Dot Blot](#)
- [Immunohistochemistry](#)
- [Immunofluorescence](#)
- [Immunoprecipitation](#)
- [Flow Cytometry](#)
- [Cell Culture](#)

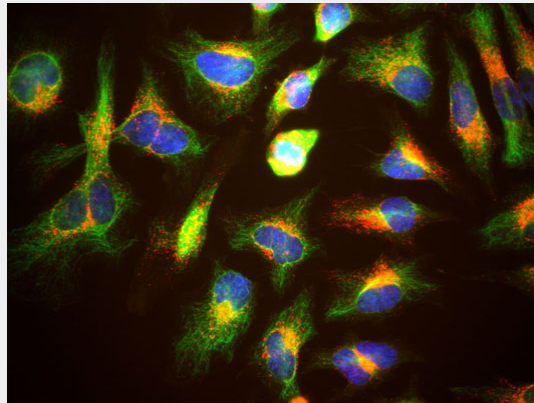
## Anti-LAMP1 Antibody - Images



Immunolabeling of HeLa cells showing vesicular staining of LAMP1 protein (cat. 1030-LAMP1, red, 1:2000) accumulated in swollen lysosomes, while Anti-Vimentin (cat. 2105-VIM, green, 1:500) specifically labels the intermediate filament network in these cells. The blue stain is DAPI to reveal nuclear DNA.



Western blot of HeLa cell lysate showing specific immunolabeling of the ~100 kDa LAMP1 protein.



Immunostaining of HeLa cells showing specific, strong cytoplasmic labeling of LAMP1 (cat. 1030-LAMP1, red, 1:2000) corresponding to lysosomes and late endosomes. Additional staining with Anti-Vimentin (cat. 2105-VIM, green, 1:500) specifically labeling the intermediate filament network. The blue stain is DAPI to reveal nuclear DNA.

#### **Anti-LAMP1 Antibody - Background**

Lysosomal Associated Membrane Protein1 (LAMP1) is a protein that is localized primarily in lysosomes but may also be present on late endosomes and the plasma membrane. LAMP1 antibodies are therefore widely used as lysosome markers. It has recently been suggested that lysosomes are activated in microglia in the progression of multiple system atrophy (MSA) and thus play a key role in its pathology (Makioka et al., 2012).